

Clinton County Connection

Published by Clinton County Electric Cooperative

Volume 14 Number 4 • email - cceci@cceci.com • webpage - www.cceci.com • April 2005



Clinton County Electric's 67th Annual Meeting

Clinton County Electric Cooperative held its 67th Annual Meeting of Members on Thursday, March 17th, at Central Community High School in Breese. Chairman Joseph Voss of Carlyle informed members that the co-op is in good financial shape and members can expect stable rates for the next few years. "Even though the increasing cost of natural gas and coal prices have caused wholesale power prices to increase more than expected," Voss told the crowd, "the co-op is hopeful that prices have peaked and will stay stable or move lower in the future. By being as efficient as we can, our rates are very comparable to the larger cooperatives. In fact, we are the ninth lowest out of the 25 distribution co-ops in Illinois."

"Our members' concerns are our number one priority.

We are very proud of our reputation for good response time on outages and getting members back in service as soon as possible," Voss concluded his report.

Clinton County Electric Treasurer, Ron Becker, told members that the cooperative was returning \$200,000 in capital credits for the years 1984 and 1985. Checks were available at the meeting for members to pick up.

President and Chief Operating Officer, Jim Riddle, then addressed the audience. He told them that their co-op leaders are hoping to pass on a decrease in 2008 when the Soyland Power debt is paid off. Riddle said the co-op continued its commitment to community in 2004 by

continued on page 8



Members line up to register for the co-op's 67th Annual Meeting of Members held on March 17th. Each member registered at the meeting received a \$10 credit on April's bill and a lighted extension cord.

Chairman Joe Voss congratulates (left) lineman Doug Vonder Haar for 20 years of service to the cooperative and (right) Superintendent of Operations Harry Buller for 30 years of service.



Re-elected to three-year terms on the Cooperative's governing board were: Kevin Kampwerth (foreground); Tim Hanke (second from right); and Randy Renth. Also pictured is Co-op manager Jim Riddle.





D A N G E R S

o f D i g g i n g



Don't get shocked by what you find in your backyard - start every planting or building project with a call to J.U.L.I.E. Cable, phone, gas and electric lines can be buried just beneath the surface. When planting

that tree or setting that post, you could dig into an earthworm, a cable line, or a 7,200-volt electric line. Call J.U.L.I.E. at (800) 892-0123 at least 48 hours before your work will begin, and keep you and your family safe.

Clinton County Electric Cooperative

618 . 526 . 7282 • Breese, Illinois

www.cceci.com

Farm Electrical Safety Is Never Out Of Style

Now that spring is well on its way and farm workers are heading back into the fields, we want to remind everyone to be especially aware of the dangers involved in working near overhead power lines.

Before excavating or digging, everyone must call J.U.L.I.E. It's an Illinois law. Call J.U.L.I.E. toll-free at (800) 892-0123.

Make sure you know the location of overhead power lines and keep farm equipment at least 10 feet away from them.

Keep in mind, the minimum 10-foot distance is a 360-degree rule – below, to the sides and above lines.

Many farm accidents have been attributed to portable augers coming in contact with overhead wires. Always lower portable augers or elevators to their lowest possible level – under 14 feet – before moving or transporting and use care when raising them.

Be careful not to raise any equipment such as ladders, poles or rods into power lines. Do not try to clear storm-damage debris and limbs near or touching power lines or near fallen lines.

If you hit a guy wire and break it, don't fix it yourself. Call the Co-op and we'll fix it. When dealing with electrical poles and wires, always call the electric utility.



If the farm equipment or vehicle that you're in should come in contact with a power line, it's almost always best to stay in the cab and call for help. Warn others who may be nearby to stay away and wait until the electric utility arrives to make sure power to the line is cut off. Stay inside the vehicle unless there's fire or imminent risk of fire.

In that case, the proper action is to jump – not step – with both feet hitting the ground at the same time. DO NOT allow any part of your body to touch the equipment and the ground at the same time. Once away from the equipment, NEVER attempt to get back on or even touch the equipment.

If planning a new out building or farm structure, contact CCEC for information on minimum safe clearances from overhead and underground power lines.

For more information on farm/home electrical safety, visit www.SafeElectricity.org.

Planning To Dig?

Be responsible and work safely. Call J.U.L.I.E. at (800) 892-0123 before you dig.

When you call J.U.L.I.E. for a locate you will be asked specific questions. The following is a copy of what CCEC uses when we call in for a J.U.L.I.E. locate:

Date: _____

- 1.) Caller's Phone Number: _____
- 2.) Caller's Name: _____
- 3.) County: _____
- 4.) Township: _____
- 5.) City/Village: _____
- 6.) Excavation Site Address: _____
- 7.) Nearest Cross St./Road: _____
- 8.) Subdivision: _____

- 9.) Distance Nearest City/Village: _____
- 10.) Type of Work to be Done: _____
- 11.) Extent of Work: _____
- 12.) Owner or Renter's Name: _____
- 13.) J.U.L.I.E. to notify: _____
- 14.) Starting Date & Time: _____
- 15.) Caller Waive Required Callback: _____
- 16.) J.U.L.I.E. Dig Number _____

Outage Reports for January and February, 2005

Individual Outages - January

<u>Date</u>	<u>Time Off</u>	<u>Location</u>	<u>Members</u>	<u>Cause/Reason</u>
01/01	3/4 hr	Oil well west of Hazlet Pk near co-op's Keyesport Sub & Cutout	1	Fuse out - Unknown reason
01/01	1 & 3/4 hr	Oil wells southwest of Hoffman	2	Cutout fuse out - Unknown reason
01/03	1/2 hr	In Stolletown	1	Transformer fuse out - customer had no power on one (1) leg of 3 phase service
01/10	3/4 hr	Advertising Sign on old Rt 50 & St. Rose Road	1	Underground Sec. burned out
01/10	1 & 1/4 hr	Jantzen's Resort	1	Cutout fuse out - Unknown reason
01/13	1 & 3/4 hr	South of Breese	1	Tree Uprooted and fell into service wires tearing triplex and bushing out of transformer - heavy rains and flooding
01/14	1 & 1/4 hr	East of Kaskaskia College	1	Line down - Unknown reason
01/17	1 & 1/2 hr	West 10th St Rd, Centralia	3	Transformer kicked out - overload
01/17	1 & 3/4 hr	West 10th St Rd, Centralia	3	Transformer overloaded
01/17	1 hr	Royal Lake	3	Transformer fuse out - overload
01/18	1 hr	Wesclin H.S. bus barn	1	Cat on transformer blew fuse
01/20	3/4 hr	North of Carlyle	1	Bad Transformer
01/21	1/2 hr	South of Breese along Germ. Rd	1	Transformer Fuse out - Unknown Reason
01/22	3/4 hr	E. of Beckemeyer along old Rt. 50	1	Primary Burned Down - Unknown Reason
01/26	1/2 hr	Oil well north of Carlyle along County Farm Rd	1	Fuse blown on Transformer - Squirrel
01/28	1	Southwest of Breese	1	Member had only 120V service - one leg of U.G. service burned out
01/28	1 & 1/4 hr	Harbor Light Bay, Carlyle Lake	5	Transformer kicked out - overload
01/30	1	Oil well near Keyesport Sub	1	Cutout Fuse out - birds
01/31	1	Oil well north of Carlyle along County Farm Rd	1	Transformer fuse blown - squirrel
01/31	1	Southeast of Trenton	1	Fuse out - Unknown

Individual Outages - February

14	1/2 hr	Monterey Coal Co., Albers	1	Cutout fuse out - Unknown Reason
16	3/4 hr	Oil well near Keyesport Sub	1	Cutout fuse out - Birds
16	3/4 hr	North of Stolletown	1	Transformer fuse out - Cat
18	1 & 1/2	South of Mascoutah	1	Cutout fuse out - Unknown

Line Outages - January

01/01	1 & 1/2 hr	East of Boulder	2	Line Burned down - Unknown Reason
01/11	2 & 3/4 hr	Southwest of Bartelso kicked out	22	Insulators shot off - line fell down - OCR
01/17	2 & 3/4 hr	Northwest of Trenton	33	Line fell down - Unknown Reason
01/22	1 hr	Northeast of Bartelso	11	Jumper broke off at Corner pole
01/22	1 & 3/4 hr	Line serving members on Otter Road, east of Trenton Sub	14	Line burned down - kicked OCR out
01/22	1/4 hr	Line southwest of Damiansville	32	OCR arcing - Load side bushing loose - Tripped out OCR to repair
29	1 & 1/2 hr	Line east of New Baden along Rt 161 down -	7	Guy wire hit by vehicle - pole cracked - line OCR kicked out

Line Outages - February

02/12	1	Line South of New Memphis	8	Farm Equipment hit neutral - neutral flipped into primary, kicking OCR out
-------	---	---------------------------	---	---

Photos by Catrina McCulley Wagner

RECIPES

Recipes taken from the April issue of Illinois Country Living magazine.

Sour Cream Coffe Cake Rachel Grundman

- 2 C. flour
- 1 tsp. baking powder
- ½ tsp. baking soda
- ½ tsp. salt
- 1 C. butter, softened
- 1-1/4 C. Sugar
- 2 eggs
- 1 tsp. vanilla extract
- 1 C. sour cream
- 3 T. sugar
- 1-1/2 tsp. ground cinnamon



Mix baking powder and soda together. Mix 3 T. sugar and cinnamon together. In a large mixing bowl, beat together butter and 1-¼ cups of sugar until combined. Beat in eggs and vanilla until combined. Add flour mixture and sour cream, alternately, to butter mixture, beating just until combined. Spread ½ mixture into a greased and floured bundt pan. Sprinkle sugar/cinnamon mixture over batter in pan. Spread remaining batter over sugar mix. Bake at 350° for 45-50 minutes. Cool in pan on wire rack for 15 minutes. Remove from pan and cool completely. Dust with powdered sugar if desired.

Tangy Country-Style Ribs Shirley Powles

- 4 lbs. boneless country-style pork ribs
- 1 med. onion, chopped
- 2 T. vegetable oil
- 1 C. chili sauce
- ½ C. water
- ¼ C. lemon juice
- 2 T. brown sugar
- 2 T. white vinegar
- 2 T. ketchup
- 1 T. Worcestershire sauce
- Dash of salt and pepper



Place ribs on a rack in a shallow roasting pan. Cover and bake at 325° for 30 minutes. Meanwhile, in a skillet, sauté onion in oil until tender. Add the chili sauce, water, lemon juice, brown sugar, vinegar, ketchup, Worcestershire sauce, salt, and pepper. Reduce heat; simmer, uncovered, for 5 minutes or until slightly thickened. Drain ribs; brush with some of the sauce. Bake uncovered for 1 to 1-1/2 hours, brushing occasionally with sauce.



Three men were elected as officers to the board of directors of Southern Illinois Power Cooperative (SIPC) at the organization's annual meeting, held March 31 in Marion. They are (l-r) Secretary-Treasurer Phil Carson of Oakdale, Chairman Richard Timmerman of Germantown, Vice-Chairman Alan Haake of Murphysboro, and President and General Manager Tim Reeves of Dongola.

Kites

The March wind is calling,
"Come fly your kite!"
The wind is blowing
With all of its might.
While kites are tossing
Up in the sky,
The wind is calling,
'Come fly up high.'

Author Unknown

Take kite flying seriously!

Always fly kites in open fields – away from power lines or trees with power lines running through them. Kites conduct electricity that could kill you if the kite touches a power line.

From The Billing Department

We want to stress the importance of paying attention to dates that appear on your bills. Monthly electric bills are due on the 25th of each month. A five-percent penalty is added to the bills of those members who do not pay by the 25th and who also were delinquent sometime during the previous six-month period. These members also receive a delinquent notice, which also indicates the date when payment must be in the office. If the bill is not paid by the final disconnect date, a collector will be sent to collect or disconnect the electric service. If you receive one of these delinquent notices, and you have paid your bill, be sure to call our office immediately. Also, if you CANNOT pay by the deadline given, be sure to call our office to make some kind of payment arrangements.

All payments are processed and deposited daily. When either sending your payment to CCEC or coming into the office to pay in person, it is important that you have your payment stub with your payment. This allows us to be sure we are posting a payment to the proper account.

We also ask that you don't put cash in the night depository and never pay a bill in cash without getting a receipt. That's simply good business procedures, not only for you but for us too.

Checks returned by your bank for insufficient funds, or any other reason, require a \$19.50 fee in addition to the amount of the check plus any charges by your bank.

For your convenience, you can have the bank automatically take your electric bill from your checking account. Call us for details on the ACH system.

If you are interested in Budget Billing, and have a good payment history, call the office.

We also would like to have every member's phone number on file. It comes in handy when there are large outages or if we have to contact you for some other reason.

If you have any concerns about your bill, Capital Credits, our rates or any other cooperative question, please call our office. We are here to serve you.

What Should I Do If My Power Goes Off?

Even though Clinton County Electric tries its best, sometimes, through faults not of our making, your power might go off. In that case, we offer the following suggestions:

- Check your main fuses or circuit breakers. If you have breakers, make sure they are in the "ON" position.
- If you have a meter pole, check the main breaker panel just below the meter socket.
- If the breaker is in the "OFF" position, check all of your wiring from the meter pole to your various buildings. If the wiring appears to be okay, reset the breaker to the "ON" position.
- If you still do not have power, check with your neighbors to see if they have power.

To report a power failure or outage or any other electrical emergency, please phone 526-7282 or

(800) 526-7282. This phone number is monitored around the clock, 365 days a year, to accept your outage and emergency calls.

- If you are calling after office hours, your call will be handled by the co-op's answering service. If you are calling during office hours, a co-op employee will take your call. Either way, please be prepared to give your name, account number and your 911 address, or in other words the address at which you get service. Please remember that it is important that you give the address where you get electric service – not your mailing address. Many, many times these two addresses are different.

Once your outage has been reported, it is dispatched to CCEC line crews who will restore your electric service as soon as possible.

Attention Members!

Members - please note! CCEC has a new e-mail address – e-mail us at cceci@cceci.com.

Also, check out our newly designed Web page - www.cceci.com.

Comments? Problems? Suggestions? E-mail us. Of course, for immediate assistance, call us at 526-7282 or 800-526-7282.

Consumer Savvy

According to the U.S. Department of Energy, the typical U.S. homeowner uses 37 percent of its water consumption is used in the shower and 26 percent is used washing clothes. 44 percent of the utility bill for a typical house is for heating and cooling, with lighting, cooking and other appliances taking up 33 percent.

Across the nation, of each energy dollar spent by a single family of three living in a 1900-square foot home in the U.S., 50 cents went to heating and cooling costs; 15 cents went for water heating; 14 cents went to power major appliances like your refrigerator, freezer, electric oven; 11 cents went to lighting; and 10 cents went to power clocks, TVs and radios.

Notice

CCEC is currently making a list of any members who are in need of wood chips. The cooperative does its tree trimming and cutting in the late fall and winter months and periodically has a stockpile of wood chips. If you want any of these wood chips, just call our office and you will be put on a list. Or you can e-mail Ahren Langhauser at langhauser@cceci.com, with your name, address and phone number.

FYI

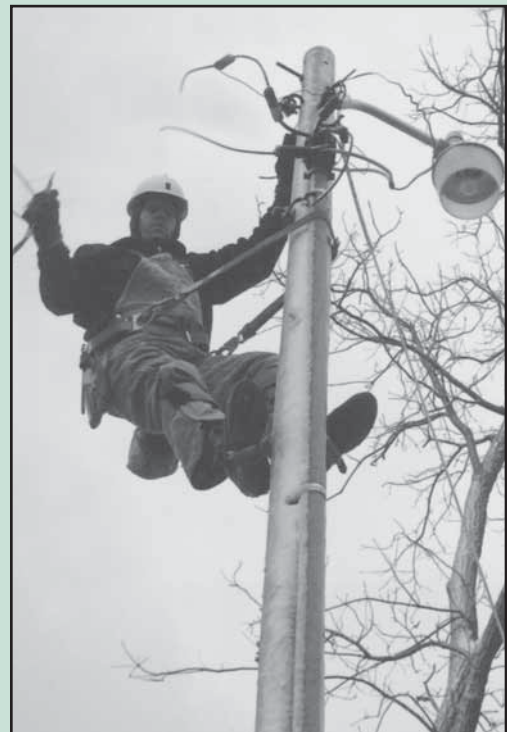
A directory of cell phone numbers will soon be published for all to have access. This will open doors for solicitors to call you on your cell phone, using up precious minutes that we pay lots of money for.

The Federal Trade Commission has set up a “do not call” list. To include your home or cell phone number on the “do not call” list, you must call from the number you wish to register. The number is (888) 382-1222. OR, you can go to their Web site at www.donotcall.gov and register up to 3 phone numbers to the do not call list. Be a friend – give this to all your friends who have cell phones.



Linemen resort to all kinds of ways to make our members happy. In early and mid-January when it seemed it would never stop raining and the creeks flooded over, CCEC linemen used a rowboat in order to restore power to a member just south of Breese.

Above, CCEC linemen, (left to right in boat) Doug Vonder Haar, Brian Taylor and Gary Albers, get ready to hoist a transformer to lineman Scott Toemmies (photo on right) on the pole.



continued from page 1

donating to local 4-H programs, Future Farmers of America (FFA) and the Kaskaskia College energy conference. "The co-op also provides awards for academic achievement, supports the Youth to Washington program, and awards six college scholarships to children of members each year," Riddle said. "Southern Services, LLC was created to enable Clinton County Electric to join other electric cooperatives in ventures beneficial to all members, such as long distance telephone service. We're pretty small, but collectively with the other Southern Services co-ops we represent 75,000 members and together we have real bargaining power," Riddle said. Riddle commented that Southern Services is looking into fuel cells, generators, wireless Internet access and health care alternatives for its members.

"We continually strive to find ways to reduce cost and improve service for our members. Everything we continue to do is for the benefit of you, the members," Riddle reported.

Members also voted to re-elect Timothy Hanke of Shattuc, Kevin Kampwerth of Carlyle and Randy Renth of Mascoutah to three-year terms on CCEC's governing board.

Service awards were given to employees Harry Buller for 30 years of service and Doug Vonder Haar for 20 years of service.

Following the meeting one \$100 cash prize and three \$50 cash prizes were given to lucky members.

Every member attending the meeting was given a \$10 credit on April's bill and a lighted extension cord.

Clinton County Connection

Published by Clinton County Electric Cooperative



Board of Directors

Joseph A. Voss, Chairman.....	Carlyle
Cary Dickinson, Vice Chairman.....	Hoffman
Ronald Becker, Secretary-Treasurer.....	Trenton
John White.....	Carlyle
James Tebbe.....	Breese
Kevin Kampwerth.....	Carlyle
Randy Renth.....	Mascoutah
Tim Hanke.....	Shattuc
Richard Timmermann.....	Germtantown

Staff

James B. Riddle.....	President
Ralph Kuhl.....	Manager of Administrative Services
Bob Kroeger.....	Engineer
Harry Buller.....	Manager of Operations
Susan M. Laux.....	Editor

Published by Clinton County Electric Cooperative

The Clinton County Connection
Clinton County Electric Cooperative, Inc.
475 North Main Street, P.O. Box 40
Breese, Illinois 62230 (618)526-7282
Office open Monday - Friday 8 a.m. to 5 p.m.



The CLINTON COUNTY CONNECTION (USPS 008-212) is published bi-monthly for \$2 per year by Clinton County Electric Cooperative, Inc., 475 North Main Street P.O. Box 40, Breese, IL 62230. Periodical rates postage paid at Breese, IL and additional mailing offices. POSTMASTER: Send address changes to CLINTON COUNTY CONNECTION, 475 North Main Street P.O. Box 40, Breese, IL 62230.